

## SIAULIAI INDUSTRIAL PARK

### I. BASIC DATA ABOUT SIAULIAI CITY

Population: 129 397

Unemployment Rate: 2,5 %

Average Monthly Gross Salary: 1674 Lt/month

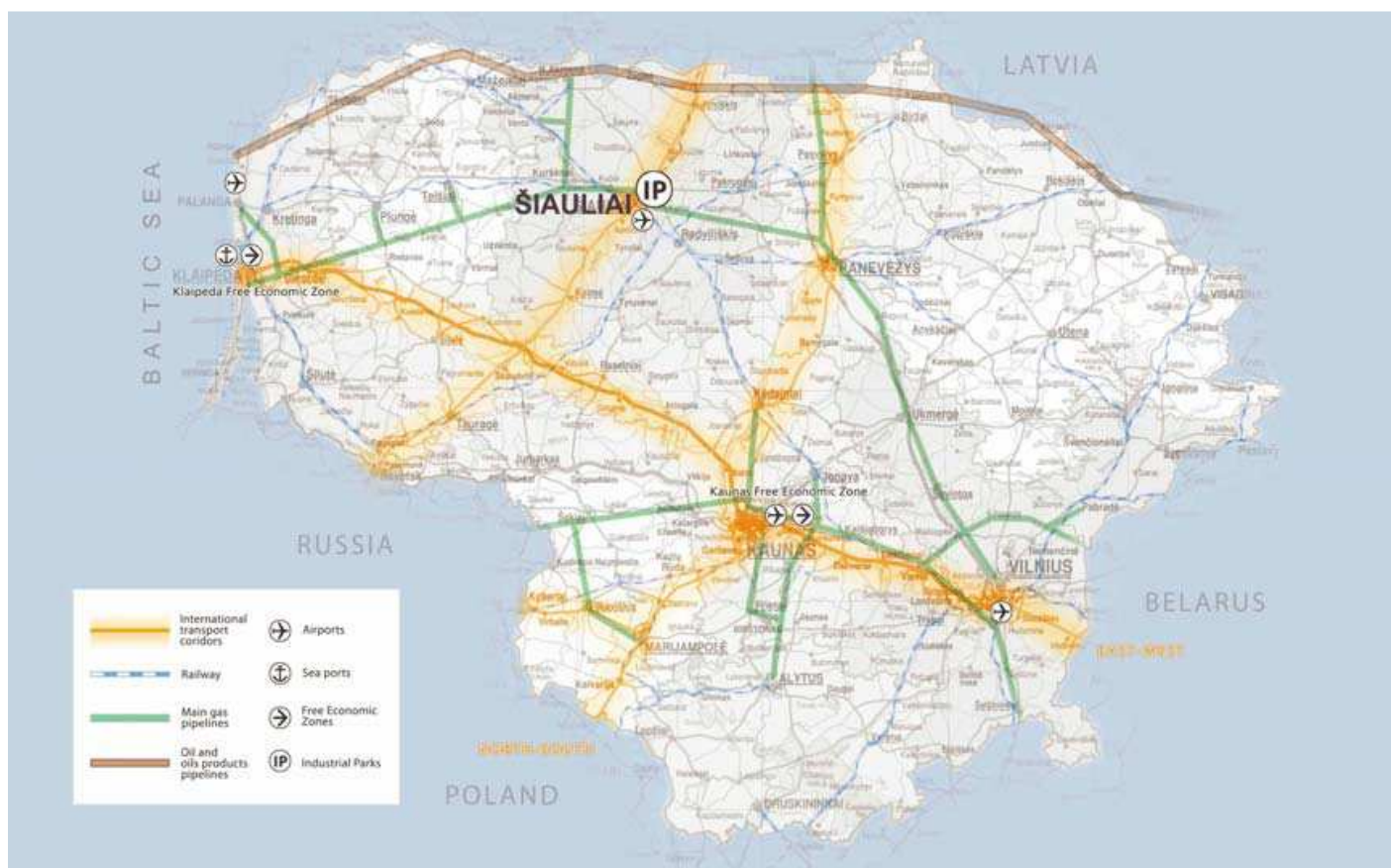
Key Industries:

- timber and furniture production;
- rubber and plastic articles production;
- electronic and optical equipment production;
- metal and metal items production;
- transportation equipment production

Key Foreign Investors: AB "Baltic Vairas" (German capital), UAB Bigso (Swedish capital), UAB DIAB (Danish capital), UAB Hampidjan Baltic (Norwegian capital),

Higher Education Institutions:

- Siauliai University;
- Siaulių Vocation Training Center;
- PI Siauliai County Management, Law and Languages College;
- PI College of Northern Lithuania;
- Siauliai College



### II. ADVANTAGES OF INVESTING IN SIAULIAI IP

Available, undeveloped state owned plots;

Conditionally not costly labor;

Diversity of industry;

Favorable transport infrastructure (airport, developed road network, railway);

Tax deductions

### III. BASIC DATA ABOUT SIAULIAI IP

Area: 219 ha

- first stage development (year 2008): 54 ha

- second stage development (year 2010): 165 ha

Size of available land plots : 0.5 – 10 ha

Available infrastructure : roads, railway, cargo airport, electricity, gas, water.

**Distance to :**

- Via Baltica International Highway – 80 km
- Klaipeda Sea Port – 150 km
- Vilnius International Airport – 220 km
- Kaunas International Airport – 150 km
- Riga International Airport – 120 km
- Palanga International Airport – 115 km

**Targeted industry sectors:**

- timber and furniture production;
- rubber and plastic articles production;
- electronic and optical equipment production

**Supplementary services to investors:**

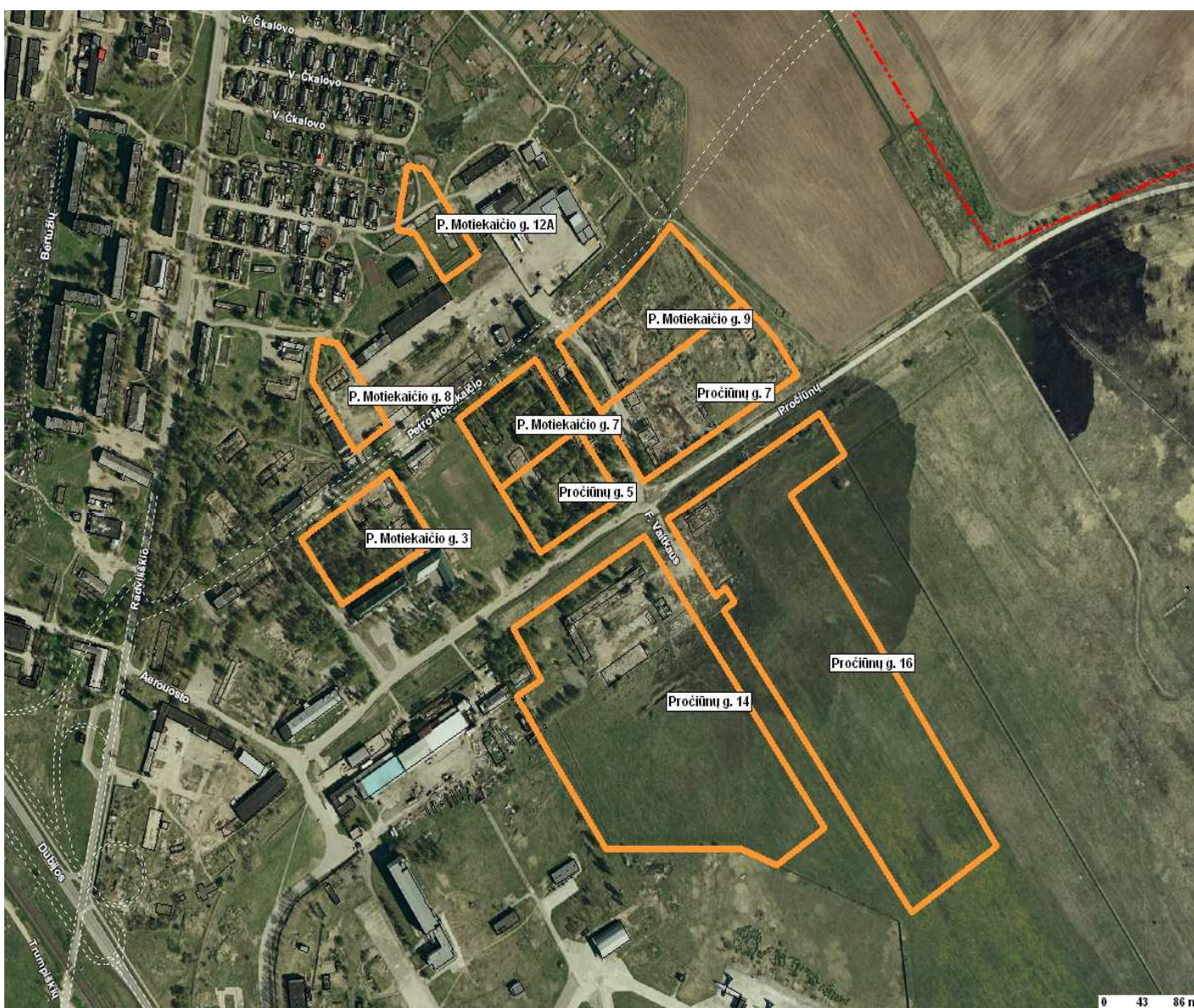
- tax deductions;
- consultancy service;

**IV. SCHEME OF SIAULIAI IP**

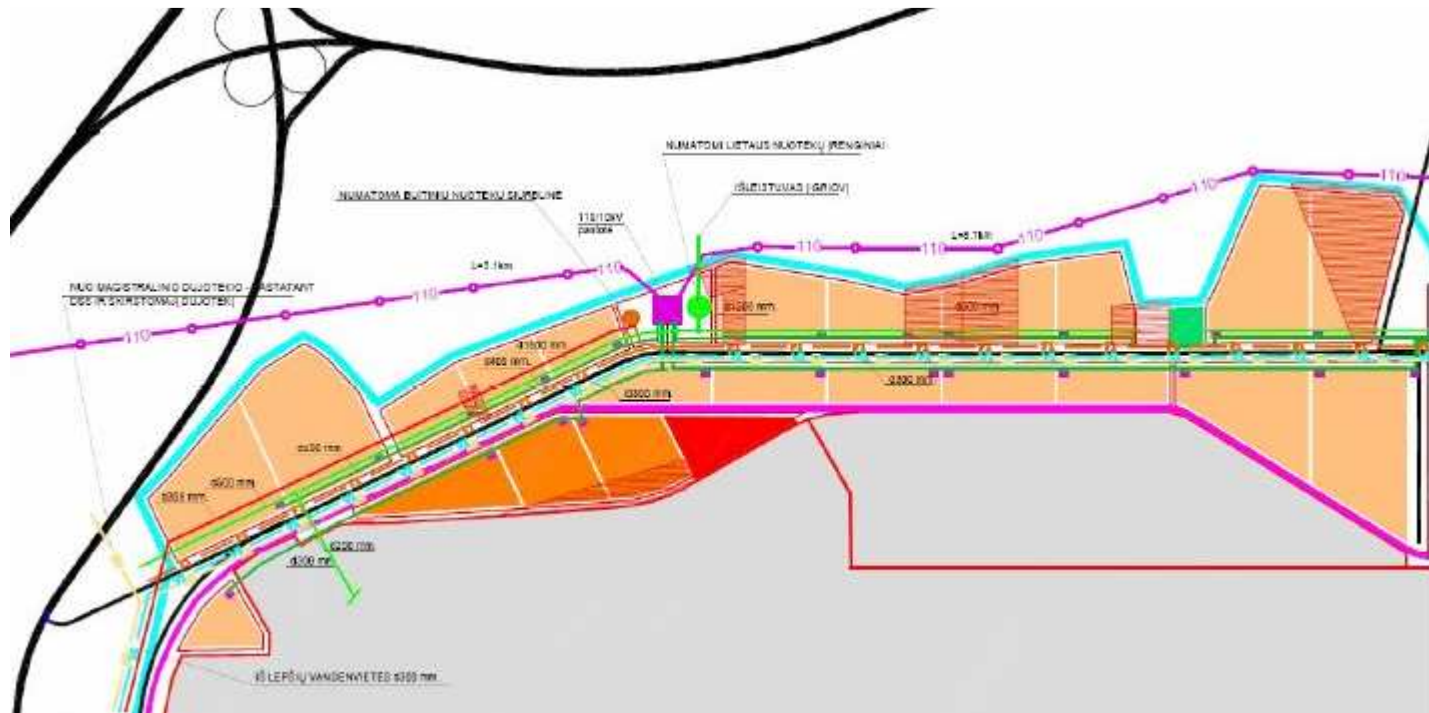
**First stage development (year 2008) ~ 54 ha**



Total area – 53,93ha  
Area for industry – 32,48 ha  
Number of industrial plots – 30  
Area of industrial plot 0,5 – 7 ha



## Second stage development (year 2010): 165 ha



Total area – 165,4 ha  
Area for industry– 106,17 ha  
Number of industrial plots – 35  
Area of industrial plot – 1,2- 9,4 ha

## V. CONTACTS

Ieva Kascionyte, Chief Specialist  
Department of Investment and City Development  
Municipality of the City of Siauliai  
Vasario 16-osios str. 62  
Siauliai, Lithuania  
Tel. +370 41 383 424 , 383 421, 383 421  
Fax.: +370 41 524 115  
E-mail : [i.kascionyte@siauliai.lt](mailto:i.kascionyte@siauliai.lt)  
[www.siauliai.lt](http://www.siauliai.lt)